



Norwegian National Police Air Support unit

«An *EGNOS* user»

Gunnar Arnekleiv
Superintendent/Chief pilot



POLITIET

Norwegian Police ASU

- Operates 3 Leonardo AW169
- Available: 24/7/365
- Missions:
 - Police missions to support local police
 - Transport of contingency units





Norwegian Police ASU - Location

- Located at the Police National Emergency Response Centre near the Capitol city - Oslo
- Collocated with other contingency units:
 - Bomb Squad
 - Intervention unit
 - Hostage rescue negotiators





POLITIET

Norwegian Police ASU

- Operations:
 - VFR DAY/NIGHT
 - IFR
 - NVIS
 - Single pilot with technical crew member





POLITIET

Norwegian Police ASU

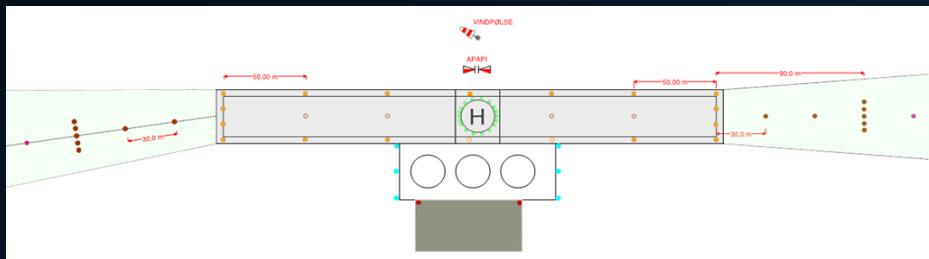
- The National Emergency Response Centre contains Heliport - ENTX





ENTX – Oslo Heliport Taraldrud

- Compliant with ICAO Annex 14
- Approach light system
- Runway light system
- Pilot controlled lighting system
- Weather station provided by NLA Solutions (HemsWx)



Taraldrud (ENTX) AA X

08:30 17:29

564 ft MSL

E S N

10.8 °C (00m 17s) **1006 hPa** (00m 17s)

HELIPAD 14306G06KT (00m 17s)

Trimble height: 211m, VA 85cm. Orthometric 172m = 564ft.
Kalibreringsdato 28/9 2020

Pins/Metar

RNP 359
LPV, DA(H) 803 (311) ft
Vis Visually - Heliport 492 ft

25 NM - ENGM 290720Z 19008KT 9999 SCT011 BKN013
10/08 Q1005 TEMPO SCT012 BKN020=
26 NM - ENRY 290720Z 19010KT 150V210 6000 OVC006
11/10 Q1006 NOSIG=

Ceilometer (00m 17s)

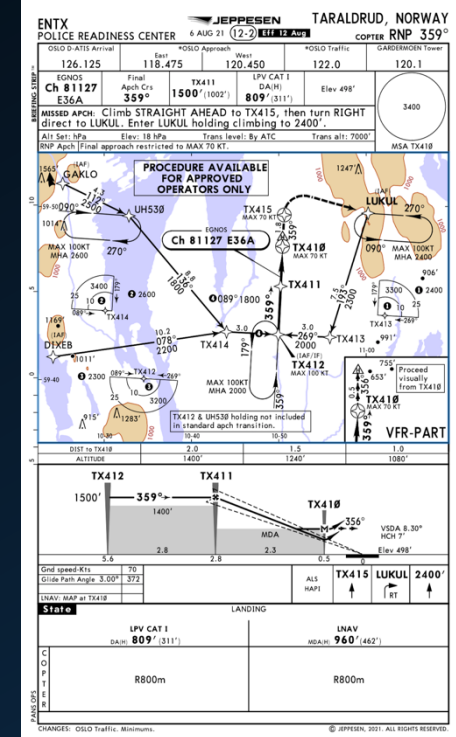
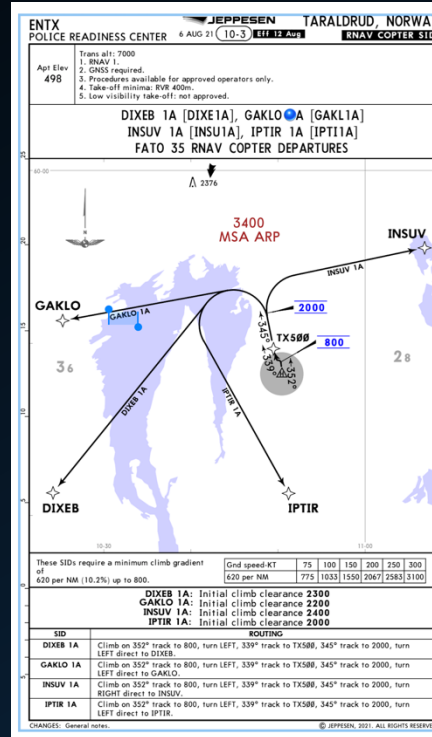
09:36 OVC 006
07:38 BKN 006
07:08 OVC 006

Kart Radar Satellitt SigWX Mer



IFR procedures

- Standard instrument departures
- EGNOS supported PinS LPV-200 approaches
- Signed EWA with ESSP in 2020
- EGNOS performs steady and increases safety by providing a reliable vertical guidance during the approach.





POLITIET

The modern AW169 with its capabilities together with EGNOS supported approaches improves the preparedness of the National Contingency units.

The Norwegian Police ASU would like to thank the ESSP for their continuous support in providing the usage of the EGNOS service.



Photo Morten Hoel Johansen